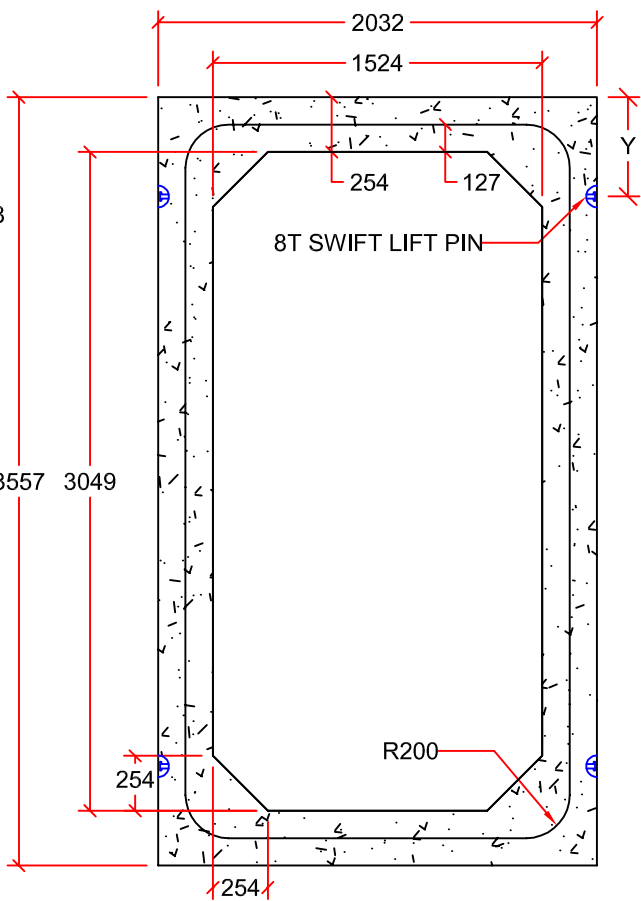


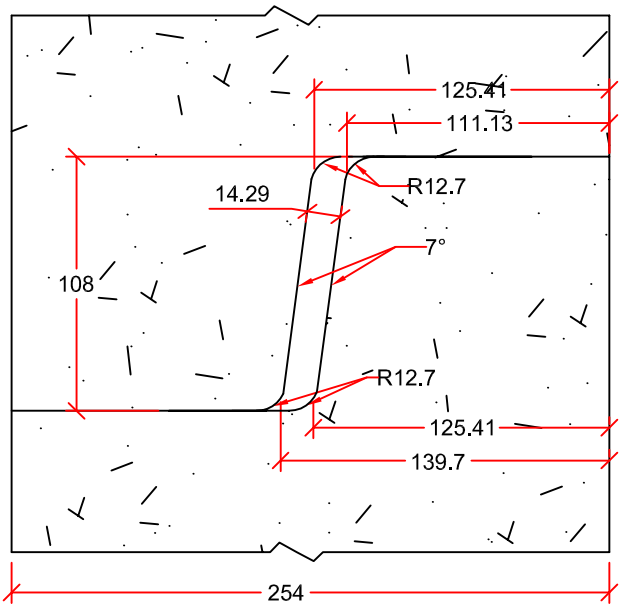
PROFILE VIEW



CROSS-SECTION

HORIZONTAL INSTALLATION  
VERTICAL INSTALLATION

BOXES AVAILABLE IN 0.6m, 1.2m, 1.5m, 1.8m, 2.0m,  
AND 2.5m LENGTHS



JOINT DETAIL

HEIGHT(H) (mm)	APPROX. MASS (kg)	NUMBER OF PINS	LOAD RATING	X (mm)	Y (mm)
600	4146	2	8T	300	460
1200	8292	4	8T	460	460
1500	10365	4	8T	460	460
1800	12438	4	8T	460	460
2000	13820	4	8T	460	460
2500	17275	4	8T	460	460

DRAWN BY:	KIM PHAM
SCALE:	NTS
DATE:	NOV. 16, 2015
DRAWING #:	3000mm x 1500mm BOX
REVISION #:	REV. 1
CHECKED BY:	TYSON DYCK

3000mm x 1500mm BOX

DIMENSIONS IN mm. FOR VERTICAL INSTALLATION, 2 SWIFT LIFT PINS ON OPPOSITE SIDES. FOR HORIZONTAL INSTALLATION, 4 SWIFT LIFT PINS ON THE SAME SIDE. STEPS AVAILABLE FOR VERTICAL INSTALLATION.

**INLAND**  
Pipe

7336 112th AVE NW. CALGARY, AB.  
PH: 403-2795531 FAX: 403-279-7648