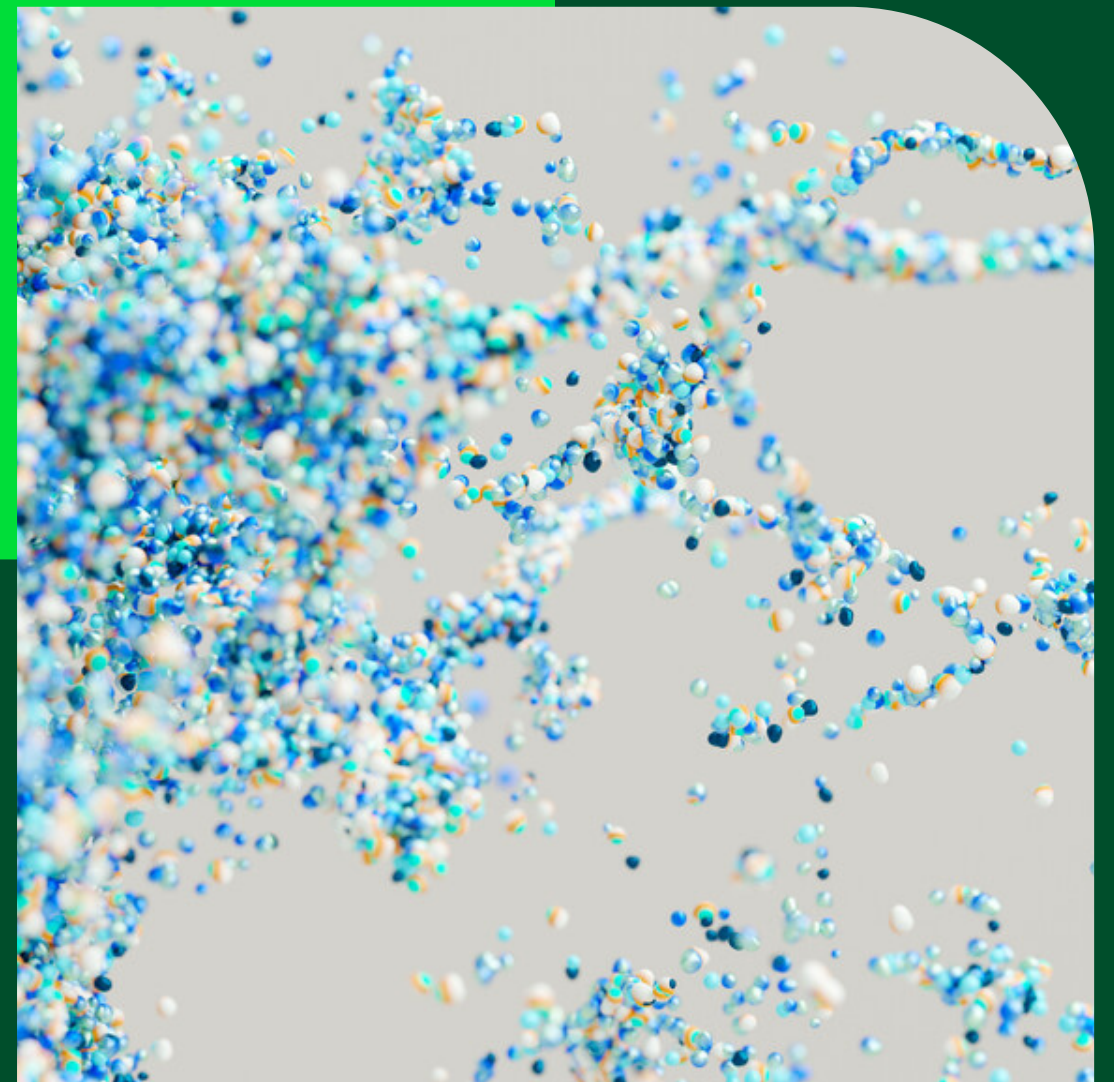


helps

**engage.
give.
build.**

Look back with us on our 2023
community engagement highlights and
overview of our Heidelberg Materials
Helps Program.





651

charities supported in the US and Canada through employee matching, donations and company funded grants in 2023

Heidelberg Materials Helps is dedicated to realizing our vision of "Simple Actions Build Strong Communities" by backing projects in our local communities that center on Arts & Education, Environment, and Health & Well-being.

The program was created to provide a framework for enhancing community involvement throughout our business sectors through donations and education, as well as recognizing and encouraging employees who contribute time and resources to nonprofit and charitable causes. As detailed in the report, many activities often cover all three aspects of our program.

We are thrilled to showcase some of these outstanding initiatives in the 2023 Community Engagement Report.

Engage

Employee matching, dollars for doers, matching campaigns

Give

Financial and material donations at the local and corporate level

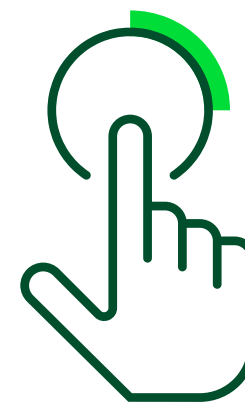
Build

Plant tours, sustainability, industry relations



Engaging

Our people engage in giving through the use of our **employee matching program** and grassroots, employee-led efforts.



our people

Employees across the company receive a yearly \$300 company match to an approved charity of their choice. An important and valuable feature of our "helps" platform is Giving Campaigns, which can be set up for specific charities and shared in specific regions. In addition to the employee match, locations across North America regularly host food, school supply and disaster relief drives.



Employees in action



In April 2023, our Servtex Quarry in the Southwest Region partnered with several surrounding communities to host a food drive benefitting The Randolph Area Christian Assistance Program (RACAP), a nonprofit food pantry. Heidelberg Materials took the lead in coordinating the 2-week drive with drop off locations at the quarry, 3 local city halls and 4 elementary schools. The company also sweetened the deal at the elementary schools and offered to host a pizza party for the grade with the most donations. At the end of the drive, employees collected donation boxes from all of the sites and combined them with their own donations at the quarry for a total of 3,227.80 pounds of food! This food drive helped to keep the RACAP food pantry stocked going into the summer months when many families need assistance.

In our Southeast Region, the employees at the Holly Springs Quarry collected and donated more than 2000 pounds of food to the local food pantry during a Thanksgiving Drive.

Our SEFA team in the Southeast Region also held a Thanksgiving food drive as part of “SEFA Serving Others” collecting for Mission Lexington in South Carolina. Employees donated food items and packed Thanksgiving meals for 150 families in the area.

These stories serve as a reminder that when we join forces to serve our communities, we create a ripple effect of kindness and compassion that touches countless lives.



Northeast Region | Allentown Office

Employees from our Allentown, PA, office volunteered at the Allentown Catholic Charities Ecumenical Kitchen. They spent the day sorting, organizing, and cleaning donated food items, all to support the soup kitchen's mission of providing hot meals and food boxes to families in need.



Midwest Region | Romeoville Quarry

Romeoville Quarry personnel volunteered their time to Feed 6. Feed 6 organizes meal packaging events in the Chicagoland area, partnering with schools, churches, corporations, and civic organizations. Volunteers come together to package nutritional meals of macaroni and cheese fortified with soy and vitamins.



Corporate Office

Employees from our corporate office volunteered at Irving Cares during National Volunteer Week in April. The food pantry at Irving Cares provides nutritious groceries to feed each member of the household three meals a day for a week.



Southeast Region | SE Concrete

Employees and their families participated in the "Pink It Up" Breast Cancer Walk in Mountain Brook, Alabama. In addition to employee participation, the company was a sponsor of this event. During October, our teams in Alabama participated in various events dedicated to raising awareness and sparking discussions about breast cancer prevention and early detection.



Midwest Region | Bloomville Quarry

The Bloomville Quarry along with the Seneca East FFA Chapter planted a tree in observance of Earth Day. The tree was planted behind the FFA building to replace a tree that had previously died. Employees from Bloomville Quarry also presented at Seneca high School about what the quarry does and told them about job opportunities.



Southeast Region | SEFA South Carolina

Our SEFA team members participated in an Adopt-A-Highway clean-up on Cedar Rd, Lexington, SC, pictured to the right. The SEFA Fly Ash Sales Team also participated in a Tennessee Adopt-A-Highway Program



Southeast Region | SEFA South Carolina



Northwest Region | British Columbia

Employees from our SEFA business in Columbia, SC, division participated in the “Light Up for Leah 5k.” This 5K benefits Camp Kemo programs of Prisma Health Children’s Hospital – Midlands.

The Northwest Region held their annual United Way employee matching drive from October 31 - November 1. The team held three events - a pizza kick-off event, a bake-off and a 50/50 prize raffle. Employee donations were matched by the company raising over \$36,000 for United Way programs that support community building, seniors, children and youth.

Employees matching

The Heidelberg Materials Helps program is also designed to recognize employee contributions to the community, and their ability to facilitate goodwill in our areas of operation on behalf of the Company. Since 2019, the company has supported employee giving through a matching monetary gift program with a total individual employee match of \$300 in a calendar year.

We use a platform where employees can log-in, search for a charity of their choice and then make a donation to be matched by the company.

In late 2023, to increase awareness around the program we ran a special bonus promotion. All eligible employees were given \$25 in their reward account of HM Helps to donate. This enticed many people to become first-time users of the employee match program once they logged in for the bonus. The results were great!

employee donations + company match =

\$85,687.97 donated in 2023

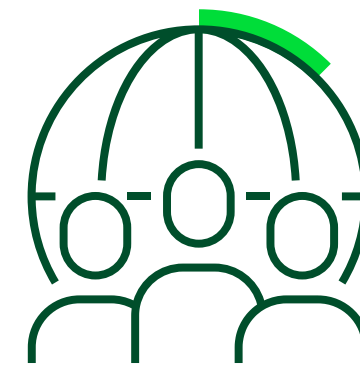


Our corporate office employees and summer interns volunteered with the Irving Schools Foundation to stuff backpacks before the back to school “Supplies for Success” event. The corporate office held a supply drive to support the event and members of the team volunteered at the backpack distribution event. Additionally, a corporate donation was made to the Foundation to support their overall mission.



Giving

We're **giving back** at the local level & investing in strategic partnerships across North America that help support the communities where we work and the future of our industry.



with purpose

Sponsorships made at the corporate level are often for larger initiatives across North America or specific missions that support the construction materials industry. In addition, our grant program enables donations to be authorized and allocated locally, enabling us to strategically assist local communities. These donations can include both material and monetary donations.

Investing in education

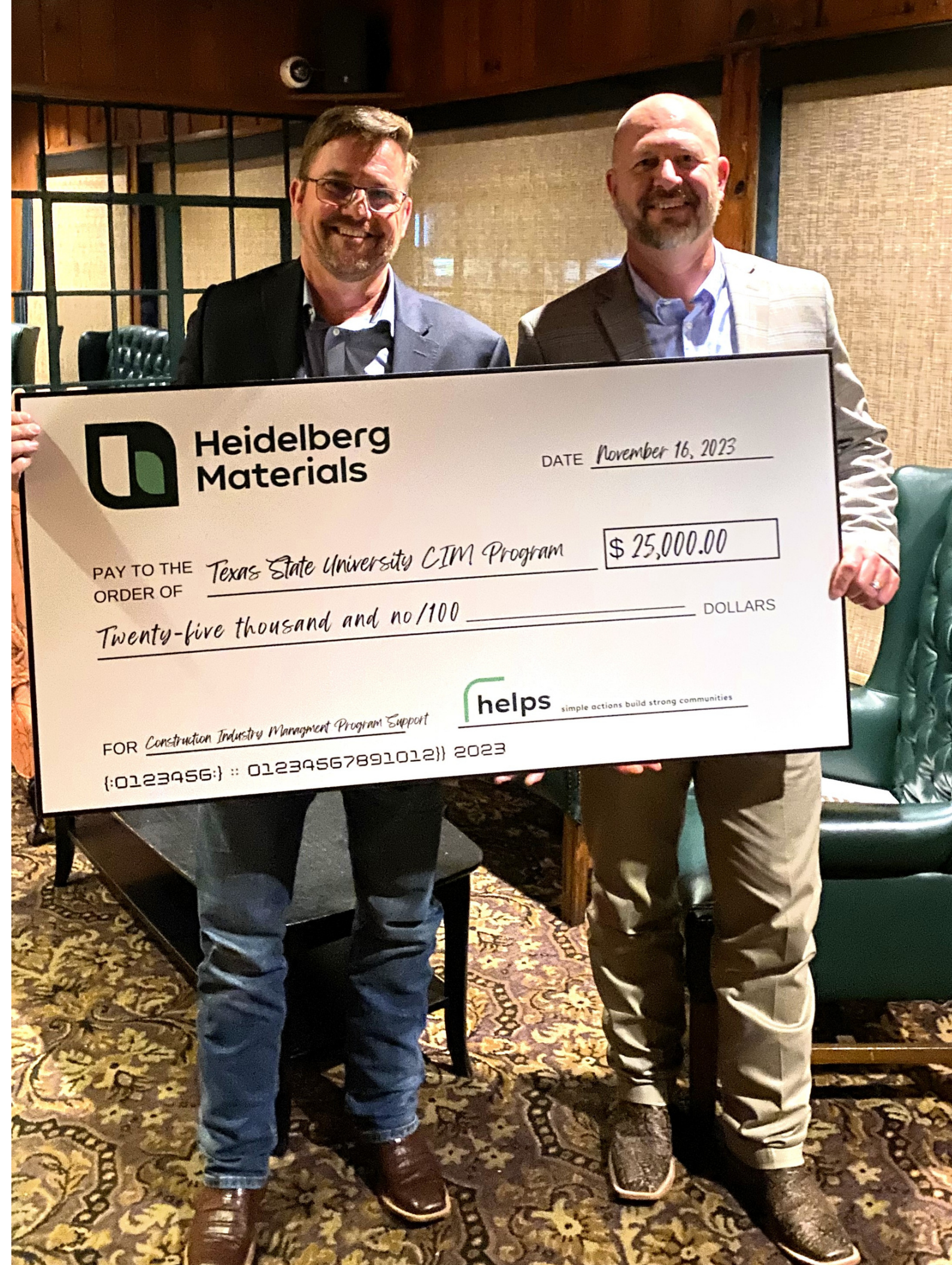


Heidelberg Materials is dedicated to fostering education and industry growth by actively supporting research and Concrete Industry Management (CIM) programs throughout North America. The Southwest Region's investment in the Texas State University Concrete Industry Management program in 2023 exemplifies our commitment to the future.

By not only providing financial backing but also being actively involved in the Patron Board, Heidelberg Materials aims to create lasting impacts. Furthermore, the completion of a five-year pledge towards the new Middle Tennessee State University School of Concrete and Construction Management Building demonstrates our long-term dedication.

Our teams engage with students from various CIM Programs, including Texas State, Middle Tennessee, and South Dakota State University. These connections and collaborations with CIM programs play a crucial role in our efforts to attract and nurture the next generation of industry talent.

Outside of these programs, we made a strategic donation to Oklahoma State University civil engineering program with Dr. Tyler Ley. Working with Dr. Ley at OSU provides the opportunity to increase the number of undergraduate students engaged in the concrete research lab - solving practical problems and exposing those students to Heidelberg Materials as leaders in aggregates, cement, SCMs and concrete.



Grant highlights



Northwest Region

The Northwest Region made a donation to support building of the new home of the CACAC Center of Excellence. The Center of Excellence includes: Central Alberta Child Advocacy Centre, Central Alberta Sexual Assault Support Centre, Alberta Health Services: Red Deer Child and Youth Addiction and Mental Health Outpatient Clinic, and the Step Up Step Down youth live-in addiction and mental health program.



Southeast Region

The Southeast Region has a long-standing relationship supporting the work of Glenwood Autism. They are a non-profit agency dedicated to serving children, adolescents, and adults with autism and other behavioral health needs in greater Birmingham, AL.



Northeast Region

The Northeast Region supported the capital campaign for the renovation of the Nazareth Branch of the Greater Valley YMCA. The original facility was built in 1918. The project is meant to renovate and expand the areas of the YMCA to better serve the community. A room in the new facility will be named after Heidelberg Materials.



Corporate

Heidelberg Materials has an annual partnership supporting the American Red Cross. We believe the Red Cross helps fulfill our mission serving people in communities, helping people be prepared or get back on their feet when an unexpected crisis occurs.



Southwest Region

The Southwest Region continued support of the Ravia Fire Department. Annual donations go to pay for repair, maintenance and purchase of safety gear and equipment for the Volunteer Fire Department. The department serves the Troy community where we are under construction for a new quarry.



In September, our Northwest Regions' North Washington team hosted its 32nd annual charity golf tournament. The tournament benefited Raven Rock Ranch. This ranch is a non-profit organization in Redmond, WA dedicated to intercepting and breaking the cycles of fatherlessness, teen suicide, human trafficking, and domestic violence by pairing at-risk youth with rescued horses.



We're proud to have supported these organizations through company grants in 2023.

ADOPT-A-CHILD
AFTERMATH BASEBALL INC
AIDANS AVENGERS
ALL AMERICAN CALENDARS LLC
ALVORD ELEMENTARY PTO
ALZHEIMER SOCIETY OF ALBERTA AND NORTHWEST TERRITORIES
AMERICAN CANCER SOCIETY INC
AMERICAN RED CROSS
AQUILLA VOLUNTEER FIRE DEPARTMENT
ATLAS CEMENT COMPANY MEMORIAL MUSEUM
BAILEY NEUMEISTER MEMORIAL
BC CANCER FOUNDATION
BEARSPAW GLENDALE COMMUNITY ASSOC.
BOUNDARY BAY AIRSHOW
BOY SCOUTS OF AMERICA
BOYS & GIRLS CLUBS BIG BROTHERS BIG SISTERS OF EDMONTON
BOYS AND GIRLS CLUB OF SNOHOMISH
BRACKEN UNITED METHODIST CHURCH
CADOMIN COMMUNITY SOCIETY
CALGARY ROTARY CLUB
CANADIAN CANCER SOCIETY
CARROLL HOSPITAL CENTER AUXILIARY
CARROLL HOSPITAL CENTER FOUNDATION INC
CARSON ELEMENTARY PARENT TEACHER ORGANIZATION
CASS COUNTY EMERGENCY MANAGEMENT AGENCY
CATSKILL COMMUNITY CENTER INC
CENTRAL ALBERTA CHILD ADVOCACY CENTRE LTD.
CENTRAL NEW YORK GARDEN TRACTOR PULLERS, INC.

CHARLESTOWN MIDDLE SCHOOL SOFTBALL
CHATELECH SECONDARY SCHOOL
CHILDREN'S ADVOCACY CENTER FOR NORTH TEXAS, INC.
CHILDRENS COTTAGE SOCIETY
CHILDREN'S MIRACLE NETWORK CANADA
CITY OF BEDFORD
CITY OF GUNTER
CLOVERDALE MINOR SOFTBALL ASSOC
COLORADO COUNTY FAIR ASSOC INC
COMMUNITY SAFETY NET
CONCORDIA LUTHERAN HIGH SCHOOL
CONNELLSVILLE HIGH SCHOOL BASEBALL PARENTS ASSOCIATION
COOLEYS ANEMIA FOUNDATION INC
COUNTY STAGE COMPANY
COURAGE FOR A CURE
DAVENPORT PROJECT GRADUATION
DECATUR CHAMBER OF COMMERCE
DECATUR ISD EDUCATION FOUNDATION INC
DELLWOOD FOUNDATION INC
DOWN SYNDROME ASSOCIATION OF ATLANTA
DREAM FACTORY FOUNDATIONS INC
EASTER SEALS CENTRAL ILLINOIS
EASTERN WESTMORELAND CAREER AND TECHNOLOGY CENTER
EDISON YOUTH SPORTS
EDMONTON HUMANE SOCIETY
ELK'S LODGE 326 PICTON
ERIE COUNTY ECONOMIC DEVELOPMENT CO INC
EVAS VILLAGE INC
FAMILY SERVICE REGINA
FLOYD CENTRAL WRESTLING GOLF SCRAMBLE
FOUNDATION FOR FREE ENTERPRISE EDUCATION
FOUR OAKS FAMILY AND CHILDRENS SERVICES
FRANCIS SCOTT KEY HIGH SCHOOL
FRATERNAL ORDER OF LEATHERHEADS SOCIETY
GARIEPY PARENTS ASSOCIATION
GARWOOD VOLUNTEER FIRE DEPARTMENT
GLENBOW RANCH PARK FOUNDATION
GLENWOOD INC
GRATITUDE CONSULTING

GREATER VALLEY YMCA
HABITAT FOR HUMANITY OF INDIANA
HABITAT FOR HUMANITY WINNIPEG
HALFMOON BAY COMMUNITY ASSOCIATION
HARVEST FESTIVAL
HILL COUNTY AG YOUTH
HISTORICAL SOCIETY OF BERKS COUNTY
HOOSIER UPLANDS ECONOMIC DEVELOPMENT CORPORATION
HOSPICE PRINCE EDWARD
IRVING POLICE & FIRE BLUE CHRISTMAS
JOHN HANCOCK ACADEMY
JOHNSON COUNTY COMMUNITY FOUNDATION INC
JOSEPH SAMS SCHOOL INC EARLY YEARS INC
JUAN DE FUCA MINOR HOCKEY ASSOC
JUST FOR FUN SPORTS
KCMR RADIO 97.9 FM
KIDS CANCER CARE FOUNDATION OF ALBERTA
KISKI VALLEY BASEBALL & SOFTBALL ASSOCIATION INC
KNIGHTS OF COLUMBUS FATHER WILLIAM P. GARRITY COUNCIL
LANE GRANT MEMORIAL FUND C/O STOCKYARDS BANK
LAWRENCE COUNTY 4-H LIMESTONE ROBOT
LAWRENCE COUNTY CANCER PATIENT SERVICES
LEEDS ELEMENTARY SCHOOL
LEVI AND CADEN OWENS
LEWISBURG CITY LEAGUE
LINDY PAVING HOLIDAY DRIVE
LIVE THANKFULLY WISE COUNTY INC
LOGAN COUNTY SHERIFF DEPARTMENT
MADOXS WARRIORS INC
MAKE-A-WISH FOUNDATION OF CANADA
MAKE-A-WISH OHIO, KENTUCKY AND INDIANA
MATTEO SHAFER LEGACY FUND
MCDANIEL COLLEGE INC
MIDDLE TENNESSEE STATE UNIVERSITY
MILITARY WARRIORS SUPPORT FOUNDATION
MINNESOTA ROYALS VOLLEYBALL
MITCHELL CHAMBER OF COMMERCE
MITCHELL COMMUNITY SCHOOLS C/O HATFIELD ELEMENTARY
MITCHELL DANCE BOOSTERS

MITCHELL FOOTBALL BOOSTERS
MJHS MHS GUARD BOOSTERS
MOUNT VERNON FIRE DEPARTMENT
MOUNTAIN VIEW EMERGENCY SHELTER
MS CANADA
NAPOLEON LADY CATS SOFTBALL INC
NATIONAL CHILD SAFETY COUNCIL
NATIONAL MS SOCIETY
NAZARETH AREA BASEBALL AND SOFTBALL
NEW WASHINGTON ARCHERY
NITTANY MOTORSPORTS
NORTH SIDE HIGH SCHOOL PTA
NORTHERN BERKS REGIONAL POLICE DPT. NATIONAL NIGHT OUT
OAK HILL YOUTH CHEER
OAKS CORNERS PRESBYTARIAN CHURCH OAKS CORNERS NY 14456
OAKS CORNERS VOLUNTEER FIRE COMPANY INC
OPERATION HOMEFRONT INC
OPPORTUNITY HOUSE
OKLAHOMA STATE UNIVERSITY R&D
PACE AT LOCKWOOD
PALS SOCKS FUNDRAISER
PANHANDLE HOME HEALTH INC
PENDER HARBOUR BLUES SOCIETY
PENN STATE UNIVERSITY
PENNSYLVANIA COLLEGE OF TECHNOLOGY
PICTON UNITED CHURCH
PIRATE CLASSIC
PLEASANT GROVE ELEMENTARY PARENT- TEACHER ORGANIZATION
PRINCE EDWARD COLLEGIATE INSTITUTE
PRINCE EDWARD COUNTY MEMORIAL HOSPITAL FOUNDATION
PRINCE EDWARD COUNTY MINOR HOCKEY ASSOC. U11 REP TEAM
PRINCE EDWARD COUNTY RADIO CORPORATION - 99.3 COUNTY FM
PRINCE EDWARD COUNTY TRAILS
RINCE EDWARD CURLING CLUB INCORPORATED
PRINCE EDWARD FITNESS AND AQUATIC CENTRE
PROJECT BEACON
PROJECT FIRE BUDDIES

PROVIDENCE CRISTO REY HIGH SCHOOL
QUINTE ROYALS
RAACA BEAVER COUNTY
RAMIRO HERNANDEZ JR. MEMORIAL SCHOLARSHIP FUND
RAVEN ROCK RANCH
RAVIA VOLUNTEER FIRE DEPARTMENT
REACHING FOR RAINBOWS CHILDREN’S PROGRAM
RECREATION OUTREACH CENTRE, ROC
REGINA FOOD BANK
RETT SYNDROME RESEARCH TRUST INC
RICE LITTLE LEAGUE
RICE YOUTH SPORTS LEAGUE
ROBERT REDFERN
RONALD MCDONALD HOUSE
ROTARY INTERNATIONAL
SAINT VINCENT DE PAUL - EDMONTON CENTRAL COUNCIL
SASKATOON DIAMONDBACKS
SASKATOON DOWNTOWN YOUTH CENTRE
SASKATOON FOOD BANK
SCOUTS CANADA
SCURRY ROSSER PARENT TEACHER ORGANIZATION
SECHELT HOSPITAL FOUNDATION
SEMIAHMOO MINOR HOCKEY ASSOC
SENECA FALLS REC CENTER
SERVANTS OF THE WORD INC
SHELTER CANADA
SOUTH CARROLL LIONESS LIONS CLUB INC.
SOUTH RIPLEY SOFTBALL
SOUTHERN INDIANA TRUCK CONVOY
SPEAK ON IT ACT ON IT
SPEAKS FOR TREES AND MORE
SPECIAL FORCES CHARITABLE TRUST
STOLLERY CHILDREN'S HOSPITAL FOUNDATION
STONE CITY ALLIANCE FOR RECOVERY & HOPE INC
STURGEON COMMUNITY HOSPITAL FOUNDATION
SUNCOAST WOODCRAFTERS GUILD
SUNSHINE COAST HOSPICE SOCIETY
SUNSHINE COAST SEARCH & RESCUE
SUNSHINE COAST YOUTH SOCCER ASSOC

TEXAS STATE UNIVERSITY - CIM
THE BOARD OF TRUSTEES OF THE CARROLL COUNTY PUBLIC LIBRARY
THE CARROLL COMMUNITY COLLEGE FOUNDATION INC
THE CHILDREN'S FOUNDATION- HASTINGS,
NORTHUMBERLAND & PRINCE EDWARD COUNTIES
THE DE LA SALLE SCHOOL
THE GREAT COMMISSION FOUNDATION
THE LEADERSHOP
THE SALVATION ARMY PICTON CORPS
THE SALVATION ARMY PICTON CORPS
THE TOWN OF UNION BRIDGE
TIM TEBOW FOUNDATION
TRIP A NATIONAL TRANSPORTATION RESEARCH GROUP
U OF M CONCRETE CANOE
UNITED WAY OF THE LOWER MAINLAND
UNIVERSITY OF WASHINGTON FOUNDATION
US CHAMBER OF COMMERCE FOUNDATION
VARIETY CHILDRENS CHARITY OF MANITOBA
VERMILION COUNTY SHERIFF’S IFFICE
VILLAGE LIBRARY OF WRIGHTSTOWN
VILLAGE OF ROMEOVILLE
WEST COAST FOOTBALL CLUB
WEST STURGEON PEOPLE AGING IN PLACE FOUNDATION
WESTERN PENNSYLVANIA YOUTH RODEO ASSOCIATION
WESTMORELAND COUNTY VETERANS OF THE WAR ON TERROR
WHITewater TOWNSHIP FIRE/EMS
WILDLIFE HABITAT COUNCIL
WINNIPEG EAST FEMALE HOCKEY ASSOC
WISE COUNTY COMMITTEE ON AGING INC
WOLF PACK ATHLETIC BOOSTER CLUB
WOODLAN BAND BOOSTERS
WOODLAND COMMUNITY DEVELOPMENT CORPORATION
WOODMAN SCHOOL PLAYGROUND
YMCA OF CENTRAL MARYLAND INC
YOUTHS ON THE MOVE RECREATIONAL CENTER INC
YW CALGARY



Building

**It's our responsibility
to be active in the
communities where
we do business,
building a stronger
future for everyone.**



community

A large part of our overall program is helping to build strong communities. It is our goal to be good neighbors and good stewards of the environment. Our company and employees lead many efforts throughout the year to educate and inform the community about our business.

Plant tours, quarry events and industry relations are just a few examples of how we are getting involved.

By engaging with the community in this way, we aim to create a more informed and supportive network that benefits both our organization and those we serve.



The Granville Island Concrete plant in our Northwest Region welcomed over 3,500 visitors during their 2023 Community Open House.

On May 13, 2023 we welcomed more than 3,500 people to our Granville Island Concrete Plant for an open house. Visitors of all ages were excited to explore the inner workings of our concrete plant during guided tours, where they learned about the process of making concrete.

Children and adults alike enjoyed getting their hands dirty while participating in fun and educational activities like digging in the sand to discover the importance of aggregates in the concrete-making process.

The Granville Island team had various booths where community members could learn about our products, commitment to safety, company history and our sustainability commitments.

The atmosphere was filled with excitement as members of the community immersed themselves in the rich history of our plant and its significant contributions to the community over the past century.

Bringing the community to us



Southwest Region | Servtex Quarry

Events like these are a great way to strengthen the relationship with the local residents and go a long way in demonstrating our **commitment to transparency and giving back to the communities where we operate.**

Our Servtex Quarry hosted an open house on November 11, 2023. Neighbors and community members were treated to lunch and had the unique opportunity to see behind the quarry walls. Servtex team members were on hand to share information about the products they make, the equipment they use and the importance of working safely. It was a great opportunity to meet local residents face-to-face and give them a chance to see the facility and what we do here.



Southeast Region | Sandy Flat Quarry

The Sandy Flat Quarry held their 3rd Annual “Fishin at the Flats” event with The Bridge Fishing Outreach group offering children from two local group homes the opportunity to come and learn to fish. Local neighbors of the mine also attended.



Northwest Region | Villeneuve Aggregates

Villeneuve Aggregates in Alberta held an open house. Community members were treated to bus tours and a BBQ lunch. They offered a giant sandbox for kids, equipment and fossil displays.



Northeast Region | St. Johnsville Quarry

The St. Johnsville Quarry welcomed the Village Mayor and Town Supervisor for a tour. This was a great opportunity for staff to spend some quality time and explain our operations and answer questions. As an added bonus during the tour, the town officials got to see a quarry blast.



Southwest Region | Bridgeport Quarry

The quarry in Bridgeport, TX, hosted 40 students from the Learning Ladder for an on-site field trip. The group of “future miners” learned about the mining process, had a tour and got their photo with a 777 haul truck. A fun day investing in the next generation of miners!



Midwest Region | Waterville Quarry

The Waterville Quarry hosted a field trip for the Anthony Wayne Schools in May. Not only did the students get a tour of the facility, but they also assisted in planting pine tree seedlings. 90 students in all participated.





Simple Actions Build Strong Communities

How can you be a part of Heidelberg Materials Helps?

Share your story

Part of what makes our program stronger is sharing the stories of how we are helping build strong communities where we do business. Continue to use Viva Engage to submit community engagement activities that may inspire other locations to look for similar opportunities. Use the hashtag #helps

Maximize your giving

Use your employee match, volunteer match and look for ways to work together with your coworkers on employee-led giving.

