

Sechelt Mine 2024 **Community Consultation**

Welcome

We're looking forward to sharing the highlights of our mining permit update

Today we will provide you with:

- Information on Heidelberg Materials, our history and core activities
- Overview of updates to our mining permit
- The opportunity to speak with Heidelberg Materials personnel
- QR code to our website & feedback survey



**Heidelberg
Materials**

Sechelt Mine 2024

Community Consultation

Who We Are

Heidelberg Materials is one of the world's largest integrated manufacturers of building materials. With more than 51,000 employees at almost 3,000 sites, we offer innovative cement, aggregate and ready-mix concrete products in over 50 countries internationally. Heidelberg Materials Canada Limited (Heidelberg) is a wholly owned subsidiary of Heidelberg Materials.

Company Operations

The core activities of Heidelberg Materials include the production and distribution of cement and aggregates, the two essential raw materials for concrete. We have operated throughout Canada since 1993, although some operations date back to the early 1900s, like Bamberton Cement, 1904.

As an industry leader, Heidelberg Materials prioritizes sustainability at every level, striving to make a positive impact on the environment and in the communities where we work and live.



Sechelt Mine Operations

Heidelberg Materials' Sechelt Mine (formerly Lehigh Materials) has been operating in the community of Sechelt since 1988. The Mine is located within the traditional territory of the shíshálh Nation.

The Sechelt Mine processes sand and gravel and produces high-quality, custom-mixed aggregate products, serving domestic and international markets. Mining activities were initiated in 1989 with a progressive reclamation program commenced in 1998. The Mine is located within the boundaries of the Sunshine Coast Regional District (SCRD), adjacent to the District of Sechelt. A 30-ha portion of the Sechelt Mine is located within the District of Sechelt municipal boundary.

We have a vested interest in ensuring compliance & creating transparency. The mine works closely with the local community toward environmental sustainability; including efforts in noise, light & dust management.

We liaise with the shíshálh Nation Chief and Council on our current operations, as well as planned developments.



Our Sustainability Commitments
define the key topics & core principles
of our Global sustainability strategy

Planning for the Future of Sechelt Mine

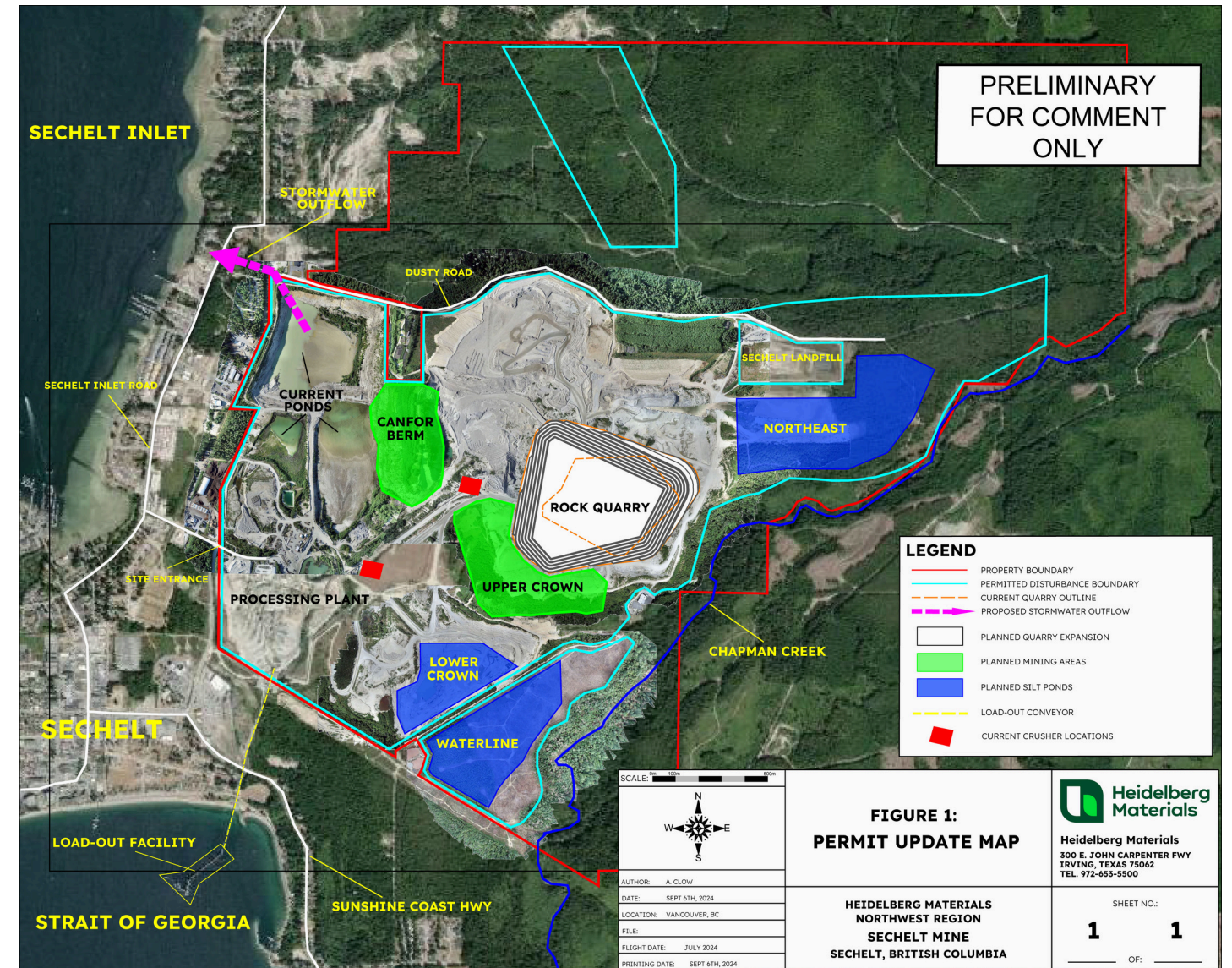
Heidelberg Materials Canada Limited will be proposing an amendment to the Mine Permit to support continued and sustainable mining.

The proposed amendment will seek to expand the granite quarry, continuing with the silt pond sequence and overburden dumps, and add detail to the currently approved mine plan.

We plan to submit the amendment to the province in 2025.

The original Mine Permit G-7-48 approved 481 hectares for disturbance. **This proposed amendment does not increase the disturbance area beyond the original approval.**

Although the granite quarry will be expanded in area and depth, it will remain within the currently disturbed mining area.



How We Mine

Mining consists of two methods:

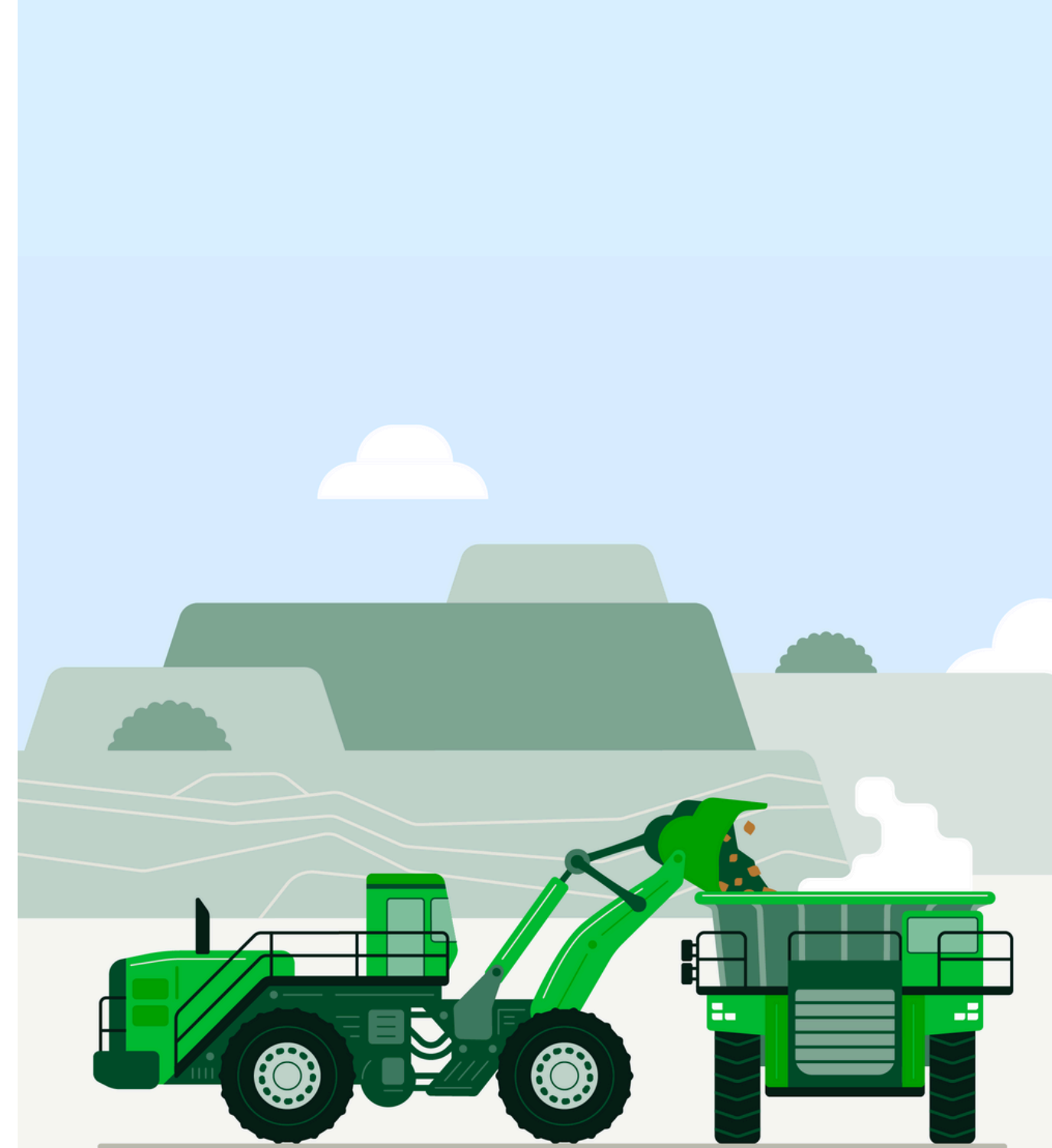
1. Sand & gravel
2. Hard-rock, granite quarrying

Sand & gravel make up approximately 80% of the material currently produced.

Excavators and front-end loaders dig the sand and gravel, loading it into large haul trucks to be transported to a crusher and then conveyed to the processor plant.

In the granite quarry, loose material overlying the rock is stripped before the granite is drilled and blasted.

The smaller fragments are then loaded and hauled to the crusher. Once through the crusher, the material is conveyed to the processing plant to be washed and sorted into stockpiles and onto a barge or ship. On board a ship or a barge, the product is then transported to local markets, or as far away as California and Hawaii.



shíshálh First Nation & District of Sechelt

How does Sechelt Mine impact its surrounding communities?

The Sechelt Mine provides meaningful benefits to the District of Sechelt and the SCRD directly or indirectly by:

- Providing over 100 full-time jobs, including employees and contractors, with a goal of maximizing employment for shíshálh Nation.
- Supporting the community through sponsorships and donations, including youth and community associations, arts and music festivals, the Sechelt Downtown Business Association, the Sunshine Coast Hospice, Sechelt Hospital Foundation, and various shíshálh Nation groups.
- Contributing to the local economy with an average of \$8.5 million per year spent on local vendors over the past eight years.



Mine Reclamation Plans

Portions of the Mine are located on lands belonging to the shíshálh Nation, other portions are on Crown lands, and the remainder of the Mine lands are owned privately, by Heidelberg or other landholders.

Reclamation objectives for the Mine include:

- Vegetation diversity
- Landform stability
- Erosion control
- Surface water flow & quality
- Ecological process functionality
- Wildlife use

Specifically, the current permitted reclamation plan returns the majority of the land to forest & wildlife habitat after mining is completed. The lower areas where the processing plant currently resides will be reclaimed to mixed industrial and commercial use. Roads, trails, and infrastructure will be removed, over-steep slopes will be regraded to safe angles, and vegetation will be re-established. Settling ponds will be either covered over and revegetated or left as shallow waterbodies. The expanded quarry will become a large reservoir.

This plan continues to be the primary strategy moving forward, but intended future land use and stewardship will be determined in collaboration with the shíshálh Nation.





We want to hear from you

**Please scan this QR code to submit
your questions or comments**

Planning for the Future of Sechelt
Mine

