

Now accepting mine reclamation fill at select Pennsylvania locations



Plymouth Meeting PA – 5100 Joshua Rd, Plymouth Meeting, PA 19462

Stroudsburg PA – 5804 Cherry Valley Rd, Stroudsburg, PA 18360

Temple/Fleetwood PA – 3128 Pricetown Rd, Temple, PA 19560

What is reclamation fill?

Reclamation fill is defined as uncontaminated, non-water soluble, non-decomposable inert solid material. **This includes soil, rock, gravel, brick*, block*, concrete, and incidental asphalt*.** The management of fill is regulated by the Pennsylvania Department of Environmental Protection (PADEP). Heidelberg Materials inspects every load of inbound material and conducts routine testing to ensure the material meets all reclamation fill criteria, & permit-specific conditions.

**Painted surfaces are not allowed.*



Terms & conditions

All sources must complete a Reclamation Fill Source Approval Form. All sources require pre-approval. Sources may require laboratory analysis. We reserve the right to reject any load for any reason.

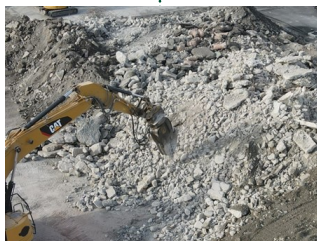


Accepted materials

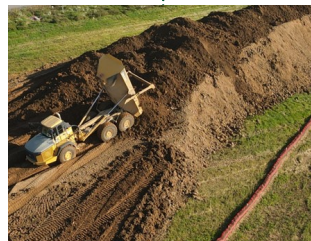
The following materials are accepted :



Concrete Materials
(Slabs, precast, brick, block, i.e. without painted surfaces)



Soils
(Uncontaminated excess soil materials i.e. from mass excavation)



Rock & Gravel
(Uncontaminated excess rock & gravel of any size)





We accept reclamation fill including:

- **Uncontaminated Soil**
- **Rock**
- **Gravel** (non-water soluble)
- **Brick** (no painted surfaces)
- **Block** (no painted surfaces)
- **Concrete** (no painted surfaces, no rebar exposed more than 2")
- **Incidental Asphalt** (must be less than 25% by load volume)

***See a sales representative for more information and pricing.**

We do not accept:

- *C&D Waste*
- *Tile/Glass*
- *Plaster/Wallboard/ Shingles*
- *Metals/Wire*
- *Tires*
- *Discarded Home or Medical Items*
- *Liquids in any load*
- *Soil from industrial or commercial sites with known spill events or contaminant storage*
- *Act 2 clean-up sites or superfund sites*
- *Fill that may produce public nuisances (i.e. objectionable odors)*
- *Contaminated materials mixed with uncontaminated material*
- *Anything not on the accepted list*
- *Any other substance Heidelberg Materials determines to pose an environmental, safety or Health Risk*