

**DESIGN NOTES**

WET CAST	$f_c = 35 \text{ MPa (28d)}$
WET CAST AIR CONTENT	4 - 7 %
EXPOSURE CLASS	F-1
CEMENT	CSA A3001 (HS)
MESH (WWR)	ASTM A1064 (485 MPa)
REBAR	CSA G30.18 (400 MPa)
PRODUCT WEIGHT	4,490 kg
CONFORMANCE	CSA A257

**GENERAL NOTES:**  
 1) ALL UNITS IN mm UNLESS NOTED OTHERWISE



SHEET TITLE

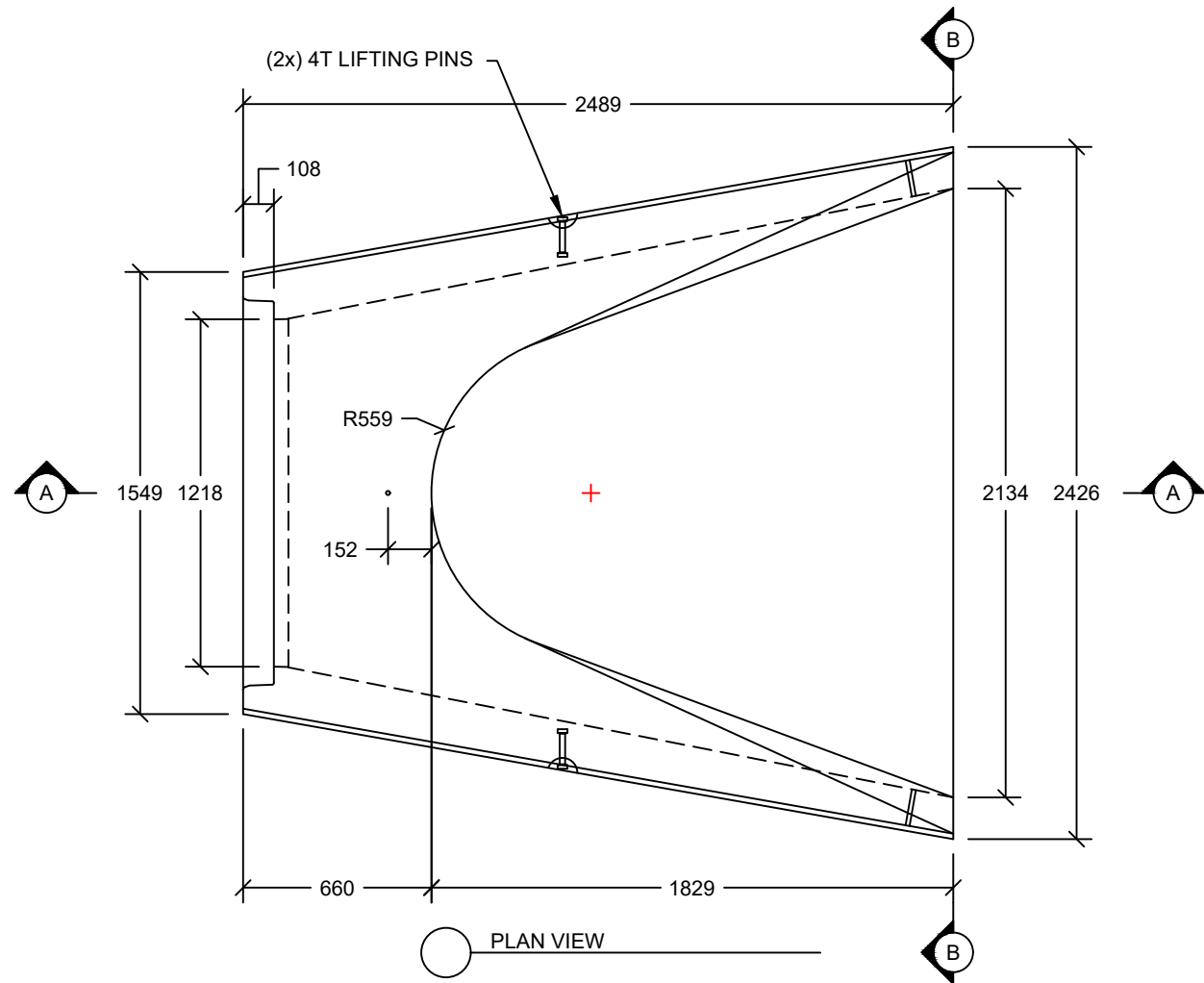
**Ø1200 FLARED END**

PROJECT NAME

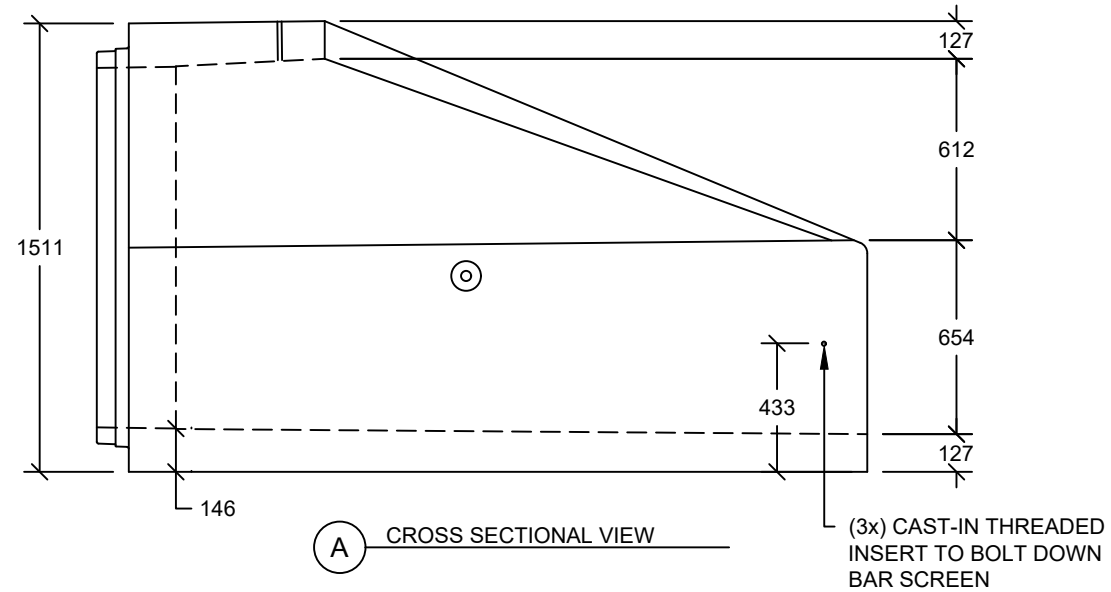
CONTRACTOR

DRAWN BY	DANIEL ROWE
CHECKED BY	K.M. -
JOB NUMBER	-----
REVISION	REV. 00
DATE	January 18, 2023

- ISSUED FOR APPROVAL
- ISSUED FOR CONSTRUCTION

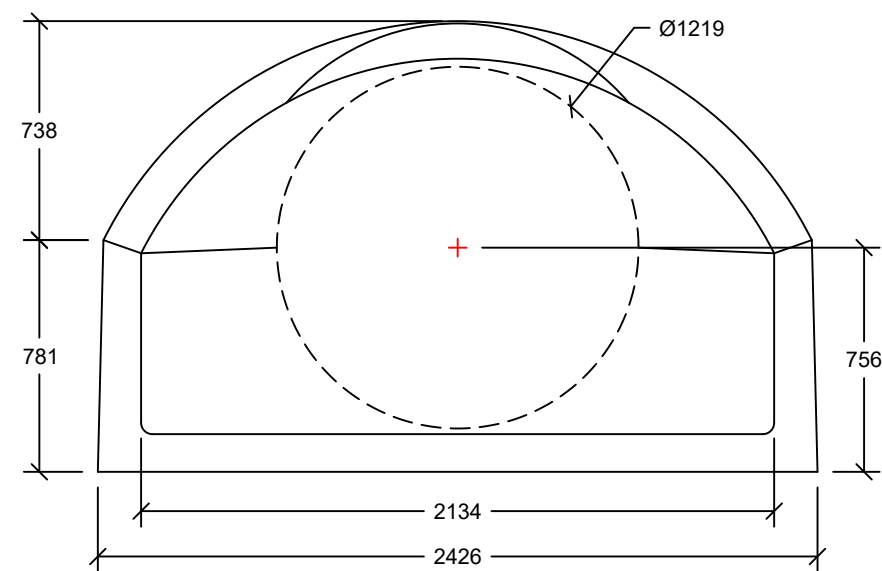


PLAN VIEW



CROSS SECTIONAL VIEW

FLARED END AVAILABLE WITH EITHER BELL OR SPIGOT JOINT



CROSS SECTIONAL VIEW