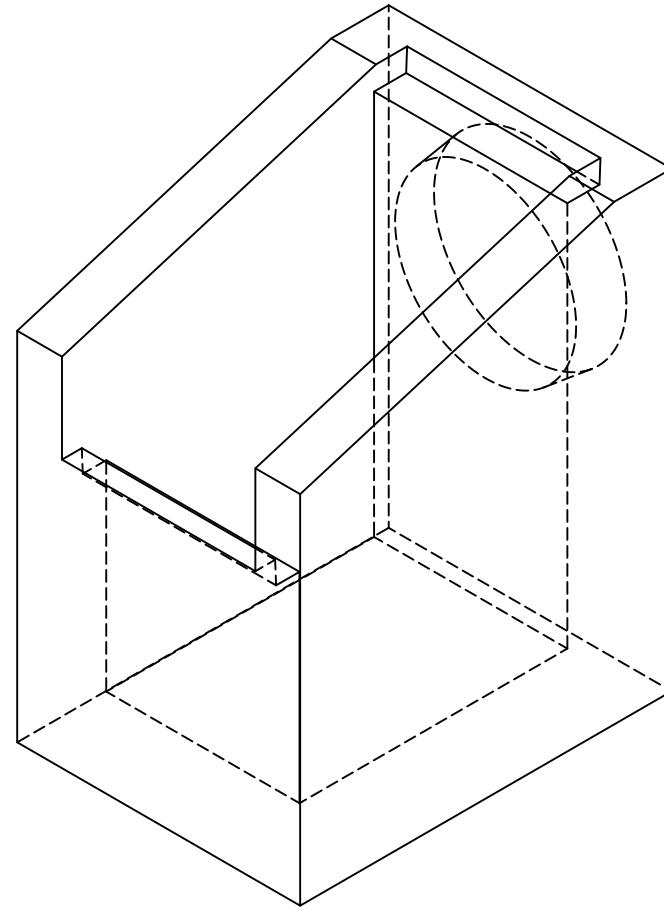


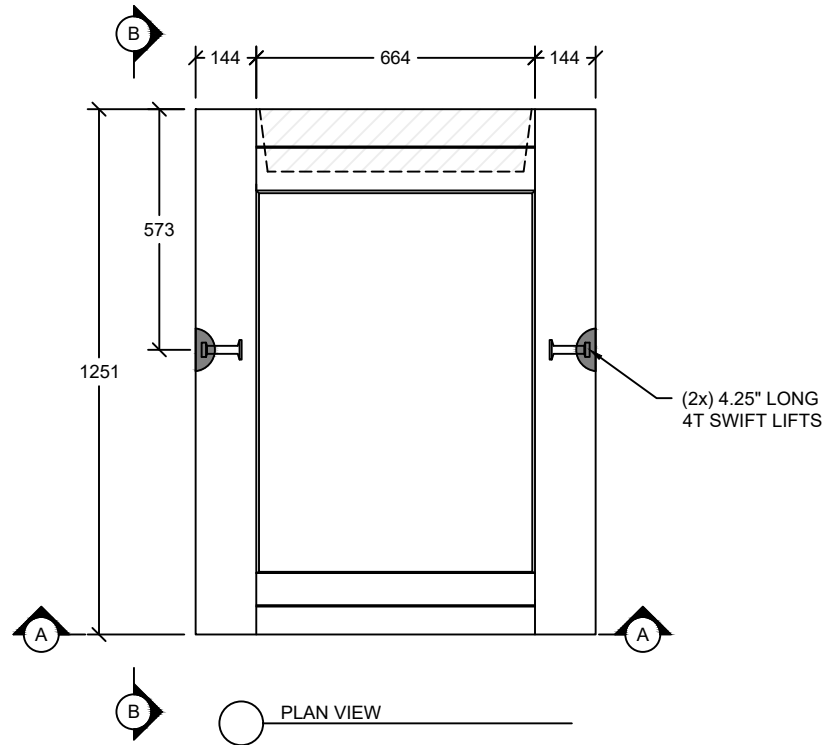
DESIGN NOTES

DRY CAST	$f_c = 41.4 \text{ MPa (28d)}$
WET CAST	$f_c = 35 \text{ MPa (28d)}$
AIR ENTRAINMENT	N/A
EXPOSURE CLASS	N
CEMENT	CSA A3001 (GUL)
MESH (WWR)	ASTM A1064 (485 MPa)
REBAR	CSA G30.18 (400 MPa)
LIVE LOAD	NONE
TRAFFIC DIRECTION	ANY
SOIL DENSITY	21 kN/m ³
PRODUCT WEIGHT	~2,100 kg
CLEAR COVER	25 mm
CONFORMANCE	CSA A23.4

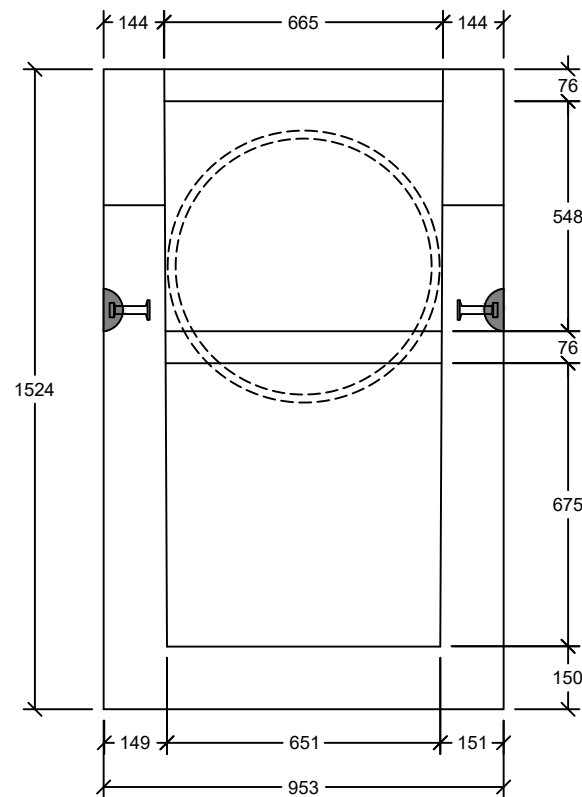
- GENERAL NOTES:**
- 1) ALL UNITS IN mm UNLESS NOTED OTHERWISE
 - 2) BENCHING TO BE DONE ON SITE BY OTHERS
 - 3) CB LEADS TO BE CORED ON SITE BY OTHERS UNLESS NOTED OTHERWISE
 - 4) ALL INTERNAL COMPONENTS TO BE SUPPLIED AND INSTALLED ON SITE BY OTHERS UNLESS NOTED OTHERWISE



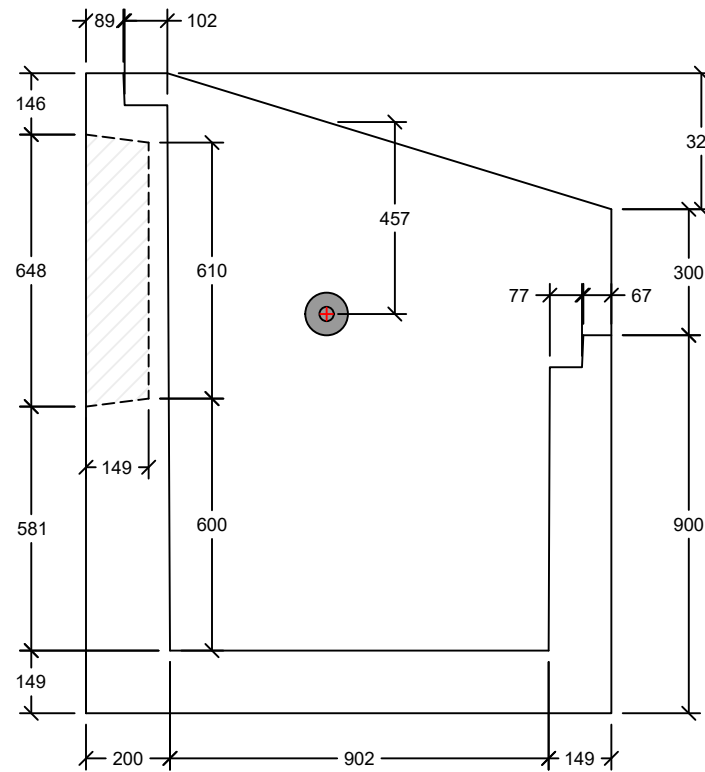
ISOMETRIC VIEW



PLAN VIEW



CROSS SECTIONAL VIEW



CROSS SECTIONAL VIEW



SHEET TITLE

MOT HW

PROJECT NAME

CONTRACTOR

DRAWN BY KARI MORRISON

CHECKED BY D.R. -

JOB NUMBER -----

REVISION REV. 00

DATE January 26, 2024

- ISSUED FOR APPROVAL
- ISSUED FOR CONSTRUCTION