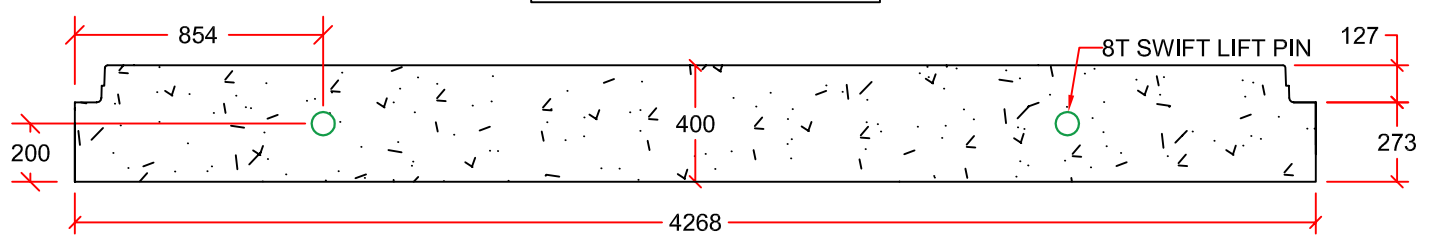


PLAN VIEW

HORIZONTAL INSTALLATION
VERTICAL INSTALLATION



PROFILE VIEW

DRAWN BY:	KIM PHAM	3600mm x 3600mm BASE/PLUG	INLAND Pipe 7336 112th AVE NW. CALGARY, AB. PH: 403-2795531 FAX: 403-279-7648
SCALE:	NTS		
DATE:	NOV. 17, 2015	DIMENSIONS IN mm. APPROX MASS 12615 KG. FOR VERTICAL INSTALLATION, 4 SWIFT LIFT PINS ON TOP SURFACE OF BASE. FOR HORIZONTAL INSTALLATION, 2 SWIFT LIFT PINS ON THE TOP SIDE OF PLUG.	
DRAWING #:	3600mm x 3600mm BASE/PLUG		
REVISION #:	REV. 1		
CHECKED BY:	TYSON DYCK		