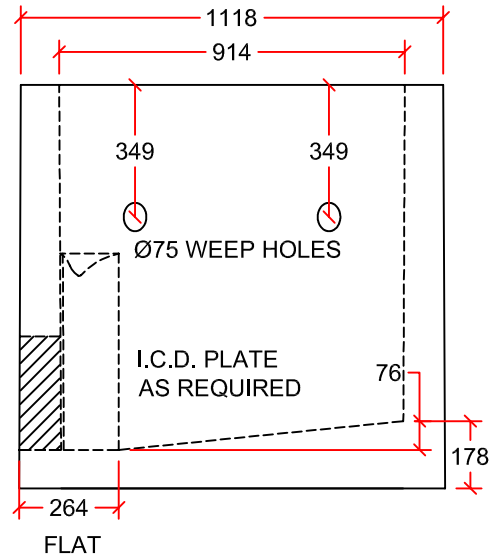


SIDE VIEW A

OPENING FOR 250mm
OR 300mm PIPE c/w
CAST-IN GASKET

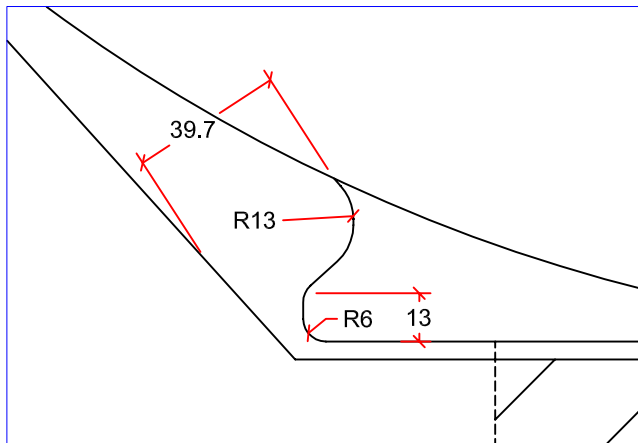
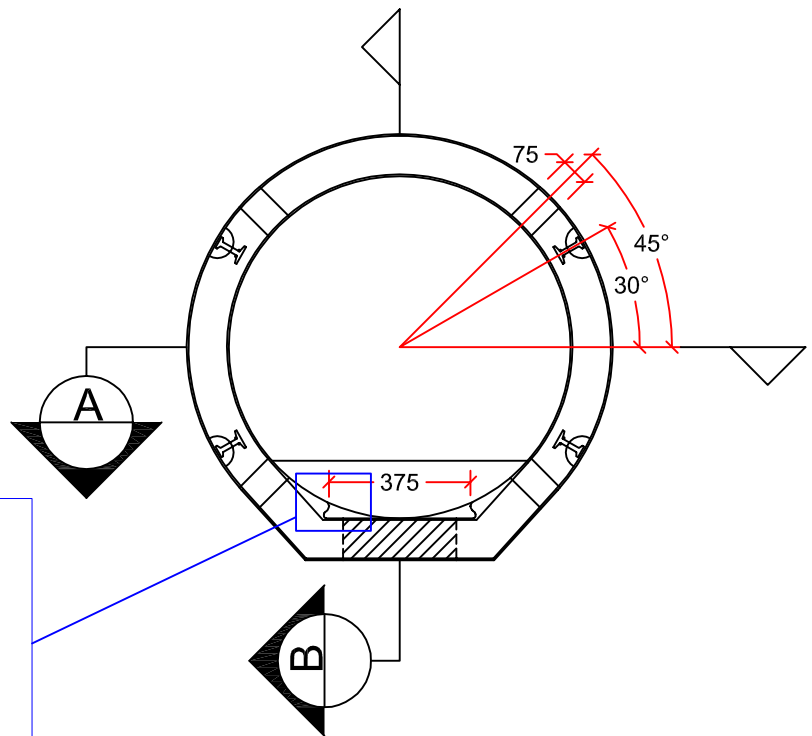


SIDE VIEW B

DESIGN DATA:

CONFORMS TO ASTM C478
TYPE HS CEMENT
25MM MINIMUM STEEL COVER
5m MAXIMUM DEPTH OF BURY
CL-800 LIVE LOADING (CSA-S6-06)
fc' = 35 MPa MINIMUM
fy (mesh) = 450 MPa
fy (rebar) = 400 MPa
CONFORMS TO CSA A23.1-04 EXPOSURE
CLASS C-1, S-1

City of Calgary reference drawing:
Precast Monolithic Catch Basin Base drawing
452.1002.032 sheet 31A



THIS PRE-CAST DRAINAGE STRUCTURE CONFORMS TO THE
FOLLOWING CITY OF CALGARY SPECIFICATIONS:
- 2012 STANDARD SPECIFICATIONS SEWER CONSTRUCTION

| | | | |
|-------------|---------------------|--|--|
| DRAWN BY: | LUCAS STEFAN | Ø900mm MONOLITHIC CATCH BASIN | |
| SCALE: | NTS | | |
| DATE: | MAY 4, 2016 | DIMENSIONS IN mm APPROX. MASS: 1200 kg | |
| DRAWING #: | 900mm MONOLITHIC CB | | |
| REVISION #: | Rev. 2 | | |
| CHECKED BY: | TYSON DYCK | 7336 112th AVE. NW. CALGARY, AB. PH: 403 279-5531 FAX: 403 279-7648 | |