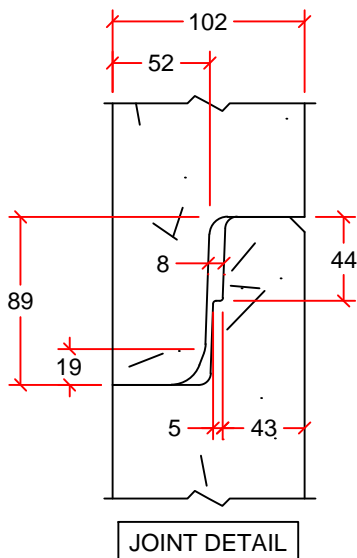


CATCH BASINS AVAILABLE IN 0.31m, 0.46m, 0.61m, 0.92m, 1.22m, AND 1.83m LENGTHS

RISERS AVAILABLE IN 0.15m, 0.31m, 0.46m, 0.61m, 0.92m, 1.22m, AND 1.83m LENGTHS



CB HEIGHT (H) (mm)	RISER HEIGHT (H) (mm)	APPROX. MASS (kg)	NUMBER OF PINS	LOAD RATING	SUMP (S) (mm)	D (mm)
310	-	490	2	4T	0	127
460	-	610	2	4T	0	152
610	-	730	2	4T	75	203
920	-	975	2	4T	75	203
1220	-	1215	2	4T	600	203
1830	-	1700	2	4T	600	203
-	150	120	-	-	-	-
-	310	250	2	4T	-	127
-	460	370	2	4T	-	152
-	610	490	2	4T	-	203
-	920	730	2	4T	-	203
-	1220	970	2	4T	-	203
-	1830	1460	2	4T	-	203

DRAWN BY:	SAM HAN
SCALE:	NTS
DATE:	NOVEMBER 17, 2015
DRAWING #:	900mm CB
REVISION #:	REV. 1
CHECKED BY:	TYSON DYCK

900mm CATCH BASIN

DIMENSIONS IN mm
INNER POUR BASE
TWO 4T LIFT PINS PROVIDED AS SHOWN

INLAND
Pipe

2494 FERRIER ST. WINNIPEG, MB.
PH: 204 334-4300 FAX: 204 334-7957