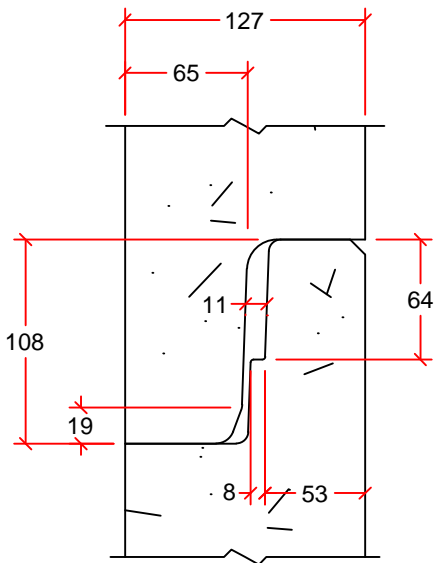



AVAILABLE IN 0.31m, 0.46m, 0.61m, 0.92m, 1.22m, 1.83m, AND 2.44m LENGTHS



JOINT DETAIL

HEIGHT(H) (mm)	MASS (kg)	NUMBER OF PINS	LOAD RATING	D (mm)
310	980	2	4T	127
460	1175	2	4T	152
610	1375	2	4T	203
920	1780	2	4T	203
1220	2175	2	4T	203
1830	2980	2	4T	203
920 Prebench	2395	2	4T	203
1220 Prebench	2790	2	4T	203

DRAWN BY:	SAM HAN	1200mm MANHOLE BASE	 2494 FERRIER ST. WINNIPEG, MB. PH: 204 334-4300 FAX: 204 334-7957
SCALE:	NTS		
DATE:	NOVEMBER 10, 2015	DIMENSIONS IN mm INNER POUR BASE	
DRAWING #:	1200mm MH BASE		
REVISION #:	REV. 1		
CHECKED BY:	TYSON DYCK		