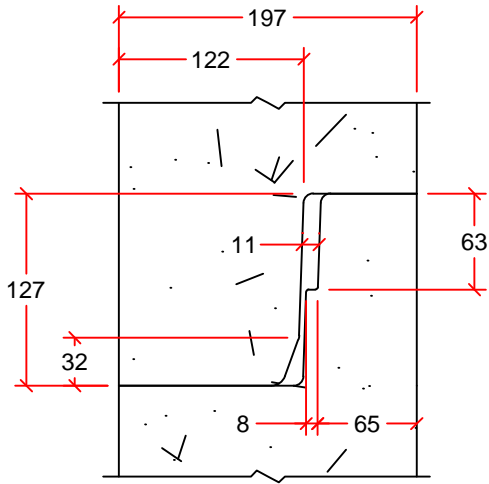


AVAILABLE IN 0.46m, 0.61m, 0.92m,
1.22m, 1.83m, AND 2.44m LENGTHS



JOINT DETAIL

HEIGHT (H) (mm)	MASS (kg)	NUMBER OF PINS	LOAD RATING	D (mm)
460	2990	2	8T	152
610	3450	2	8T	203
920	4400	2	8T	305
1220	5315	2	8T	305
1830	7185	2	8T	457
2440	9055	2	8T	457

DRAWN BY:	SAM HAN	1800mm MANHOLE BASE	 <p>2494 FERRIER ST. WINNIPEG, MB. PH: 204 334-4300 FAX: 204 334-7957</p>
SCALE:	NTS		
DATE:	NOVEMBER 12, 2015	DIMENSIONS IN mm INNER POUR BASE	
DRAWING #:	1800mm MH BASE		
REVISION #:	REV. 1		
CHECKED BY:	TYSON DYCK		