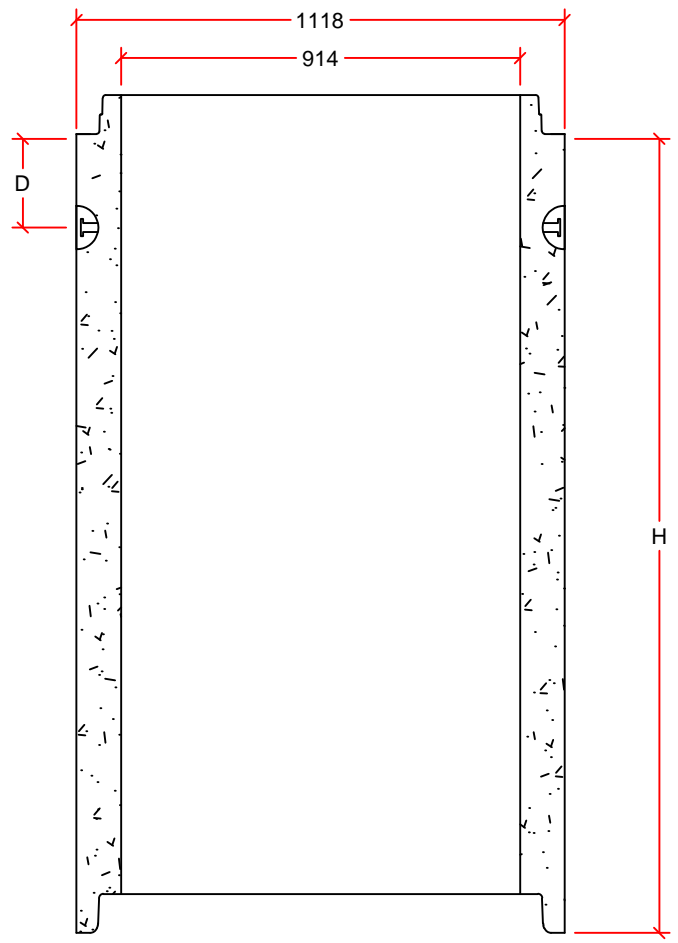
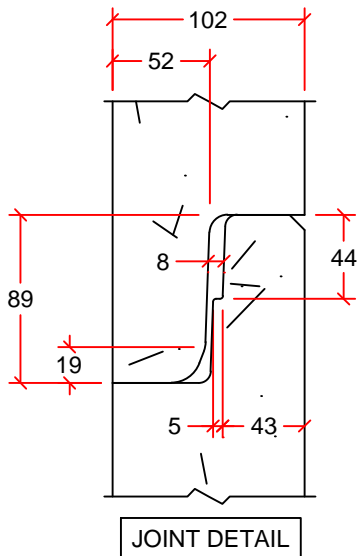


CATCH BASINS AVAILABLE IN 0.31m, 0.46m, 0.61m, 0.92m, 1.22m, AND 1.83m LENGTHS



RISERS AVAILABLE IN 0.15m, 0.31m, 0.46m, 0.61m, 0.92m, 1.22m, AND 1.83m LENGTHS



CB HEIGHT (H) (mm)	RISER HEIGHT (H) (mm)	APPROX. MASS (kg)	NUMBER OF PINS	LOAD RATING	SUMP (S) (mm)	D (mm)
310	-	490	2	4T	0	127
460	-	610	2	4T	0	152
610	-	730	2	4T	0	203
920	-	975	2	4T	75	203
1220	-	1215	2	4T	450	203
1830	-	1700	2	4T	450	203
-	150	120	0	-	-	-
-	310	250	2	4T	-	127
-	460	370	2	4T	-	152
-	610	490	2	4T	-	203
-	920	730	2	4T	-	203
-	1220	970	2	4T	-	203
-	1830	1460	2	4T	-	203

DRAWN BY:	SAM HAN
SCALE:	NTS
DATE:	NOVEMBER 17, 2015
DRAWING #:	900mm CB
REVISION #:	REV. 1
CHECKED BY:	TYSON DYCK

**900mm CATCH BASIN**

DIMENSIONS IN mm  
INNER POUR BASE  
TWO 4T LIFT PINS PROVIDED AS SHOWN

***INLAND***  
**Pipe**

3000 10th AVE. REGINA, SK.  
PH: 204 334-4300 FAX: 204 334-7957